

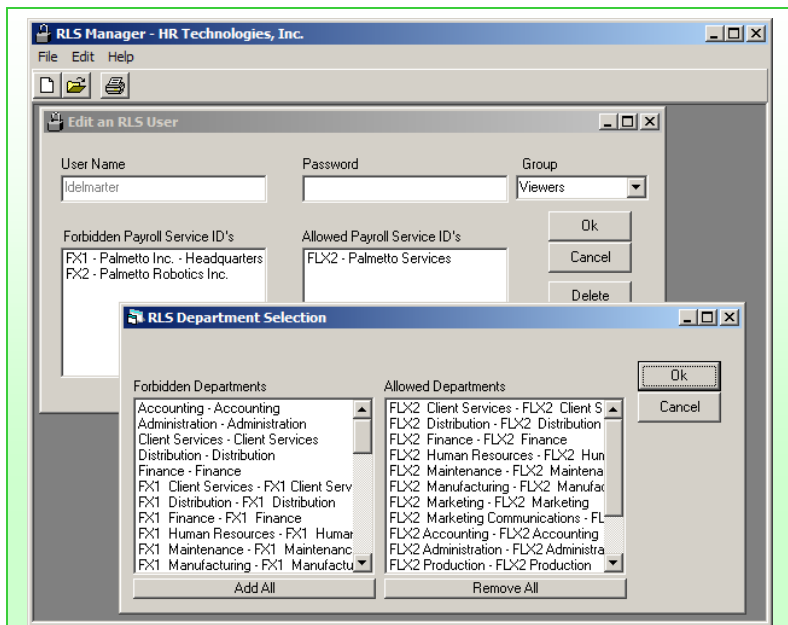
# Row-Level Security Manager

The **HR Technologies** Row-Level Security Manager (**RLS Manager**) allows a customer running the SQL version of HR/Payroll (formerly Source 550) to use more complex row-level security.

Standard row-level security stores all row-level information on a view and SQL Server does not allow a view to be larger than 2 kilobytes (KB). Customers with complex row-level security requirements can easily exceed this 2KB limit. **RLS Manager** maintains all row-level security information in a set of tables instead of a view. As new users are added or security restrictions are changed, **RLS Manager** updates these new tables. With **RLS Manager**, security can be much more complex. New users can be added or security restrictions changed while users are in the system.

**RLS Manager** can be added to the HR/Payroll Activity Manager toolbar or the Activity Manager list of activities for easy access. A set of reports is also included so that users and your row-level security configuration can be documented.

Improve your row-level security management by purchasing **RLS Manager** today.



Sample screen from the Row Level Security Manager by **HR Technologies, Inc.**

- Easily Manage Your Complex Row-Level Security Requirements
- Add Users and Change Security Rules at any time
- Integrate with the System Manager Toolbar
- User Friendly Interface